


How To - Erase and Reveal

1. Insert any image onto a page in Notebook.
2. Select Drop-Down Menu and lock image.
3. Select Pen Tool from Toolbar or pick up pen from Pen Tray. Color over image.
4. Highlight all ink.
5. Select Properties Tab. 
6. Choose Line Style. Adjust thickness so it covers entire image. Adjust color to match background color.
7. Pick up eraser from Pen Tray or select Eraser from Toolbar and erase over digital ink.

How To - Erase

Which Biome?

antelope



Jun 16-8:23 AM

Erase and Reveal

What am I?

Erase to find the next clue.

I am a bird.

I have 2 legs.

I am covered in feathers.

I can fly.

I am the world's largest bird.

I live at 60-80 degrees.

Answer

Extraordinary made simple™ | SMART

Erase and Reveal #1

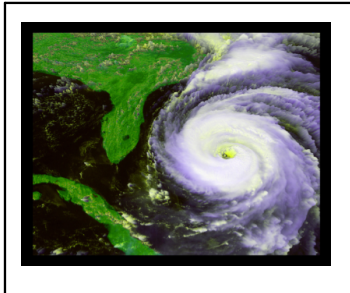
How to create Erase and Reveal #2

1. Add title and instructions.
2. Select several clues to be used in the activity. These may be typed in one text box or as several.
3. Lock the clues in place.
4. Add a picture of the answer and lock it in place.
5. Select a pen color to match your background.
6. Cover all clues and answer with the digital ink.
7. Save your work

Erase and Reveal Instructions #1

Erase and Reveal

Literacy
Context Clues



Extraordinary made simple™ | SMART

Magic Eraser

How to create Erase and Reveal #3

1. Add title if appropriate.
2. Select a graphic and lock in place. Adding a border helps define the area better.
3. Select a pen color to match your background.
4. Cover graphic with the digital ink
5. Save your work
6. Have student come to board and erase a bit of the cover. Others guess what the item is. This may be any picture related to your content.

Erase and Reveal Instructions #2

Erase and Reveal #4

Put the words on the correct dictionary page then put the words on each page in alphabetical order.

cross
computer
curve
consecutive
convex

Check your answers by using the magic eraser on the small dictionary to the right.

Example

How to create Erase and Reveal #4

This activity is very similar to activity #1, this just uses a graphic and adds more interactivity.

1. Add title and instructions.
2. Select ideas and graphic to be used in the activity.
3. Lock necessary items in place.
4. Select a pen color to match your background.
5. Cover all clues/answers with the digital ink
6. Save your work

Erase and Reveal Instructions #3

Example

Drag the labels to his body and use your magic eraser to check!

pelvis
upper arm
shin bone
toe skull
lower arm
foot
rib cage
thigh bone
finger
hand

pelvis
thigh bone
shin bone

Erase to reveal

Identify these cities

Los Angeles
Houston
Little Rock
St. Louis

USA - major cities

Hide and Reveal

Using the shapes tool to create a box. Click on the box that you just created. Now select the properties icon Change both the outline and the fill color. Add and direction arrow to pull the box. Drag the box out of the way to reveal the text hidden underneath.

Extraordinary made simple™ | SMART

Hide & Reveal